

+ Supplemental

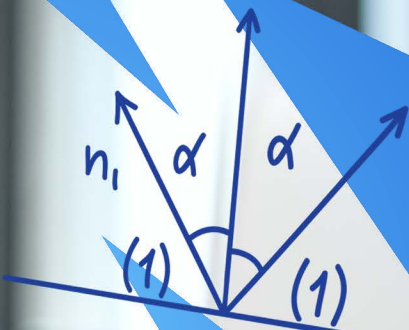
Grades PreK–12

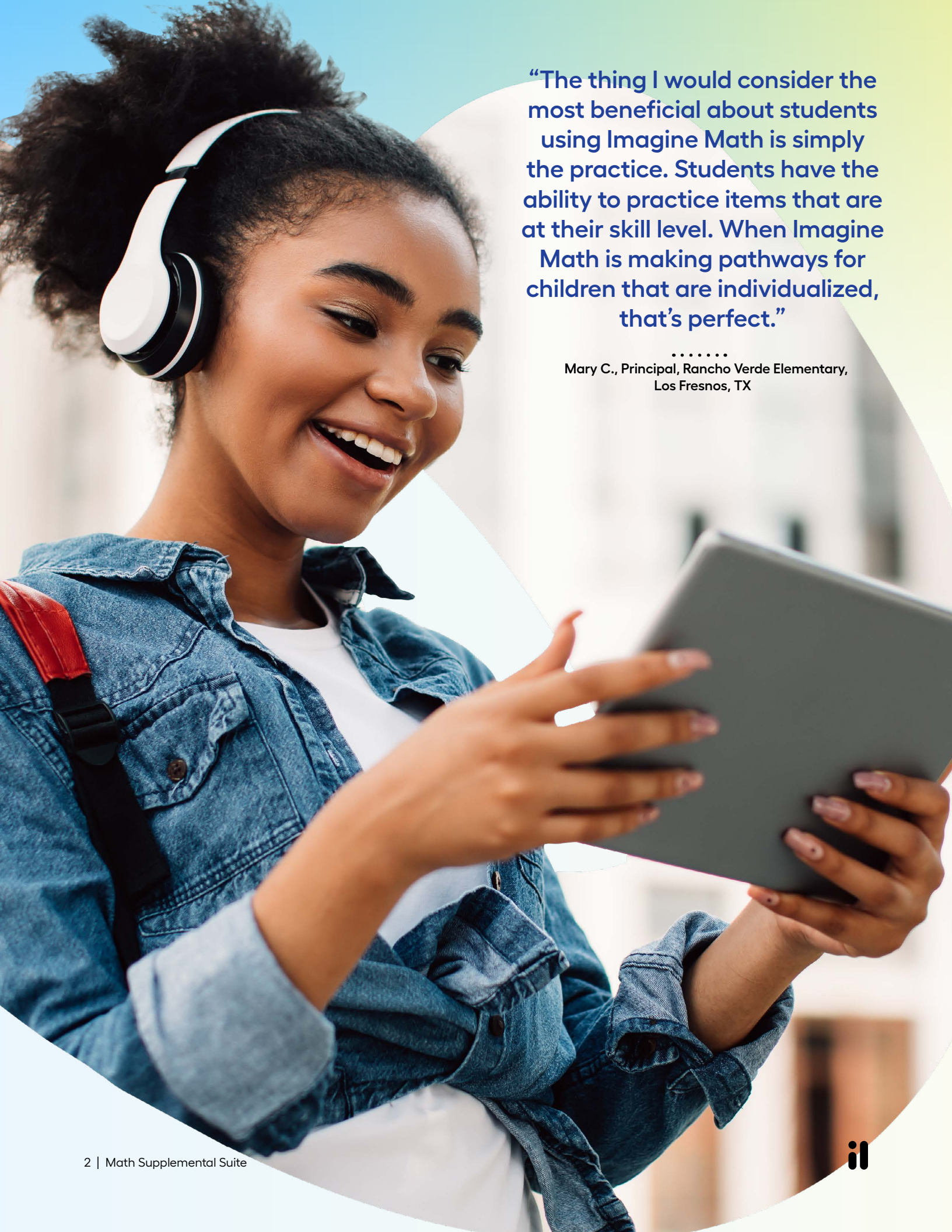
Math Supplemental Suite

Age-appropriate, adaptive solutions built to equitably engage PreK–12 students with grade-level math



$$z = y + 3$$





“The thing I would consider the most beneficial about students using Imagine Math is simply the practice. Students have the ability to practice items that are at their skill level. When Imagine Math is making pathways for children that are individualized, that’s perfect.”

.....
Mary C., Principal, Rancho Verde Elementary,
Los Fresnos, TX

Give All Students Access to Grade-Level Math



Provide support in multiple, unique ways to bridge gaps in learning

Even as students work to catch up, they need exposure to grade-level math so they're prepared when they reach it. Students already at or above grade level need opportunities to tackle challenging concepts.

Imagine Learning's powerful math solutions work together to support all students with rigorous instruction that is:

Personalized and adaptive — Give educators curricula tailored to each student without adding planning time.

Strategically scaffolded — Help students make sense of concepts and explain their thinking with purposeful scaffolds and first-language support.

Age-appropriate and fun — Engage students with activities tailored to their age level and interests, not the grade level of the content.

Supporting the students who need it the most

108Q

The average Quantile® score growth for students after a year of using Imagine Math®.

63%

The percentage of Imagine MyPath® users who exceeded expected growth on the NWEA MAP® Growth™ Math Test.

A Comprehensive Math Suite for Grade-Level Success

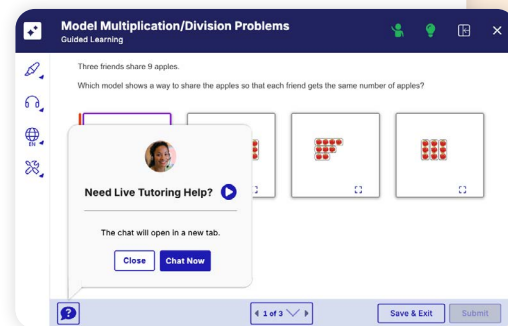


Grades K–8

Adaptive, data-driven learning that supports intervention, grade-level practice, and enrichment

Imagine+® Math provides adaptive, personalized pathways that support students performing below, at, or above grade level.

- ✓ Purpose-built and assessment-driven pathways provide each student with the intervention, on-grade-level practice, or enrichment they need
- ✓ Teacher-tailored customizable assignments offer targeted opportunities to address specific skills and standards
- ✓ On-Demand Tutoring delivers rigorous, one-on-one, live learning support to keep students progressing (available in English or Spanish starting in grade 3)



Grades 1–5

Make math fluency fun and effective with award-winning gamification

Imagine Math Facts® helps students gain automaticity in addition, subtraction, multiplication, and division — all in an engaging video game environment. Whether implemented in class or assigned as homework, students gain a foundation for higher-order thinking and build pre-algebra readiness.



- ✓ Immediate feedback ensures accurate practice
- ✓ Easy-to-read visual reports make tracking student progress simple
- ✓ Three modes — friendly, default, and ninja — empower students to play at their level

//CODiE//
2021 SIIA CODiE WINNER

Best Gamification in Learning

Fact fluency is the #1 indicator of algebra readiness



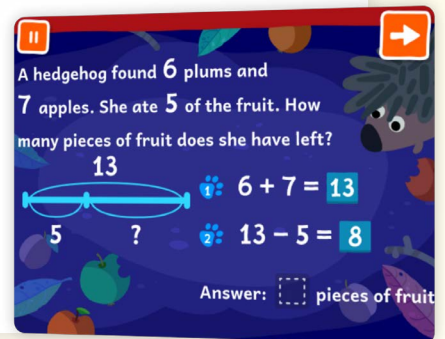


Grades PreK–Geometry

Drive students' curiosity and build confidence with grade-level math

Imagine Math's adaptive curriculum challenges students with fun, grade-level content while scaffolds support success. Its two age-appropriate learning environments drive student engagement.

- ✓ Use personalized grade-level pathways or create custom ones aligned to your program goals
- ✓ Academic discourse and contextual vocabulary strengthen communication skills
- ✓ Certified, Live Teachers offer real-time, on-demand scaffolded instruction in English or Spanish for grades 3+ before, during, and after school at students' point of need

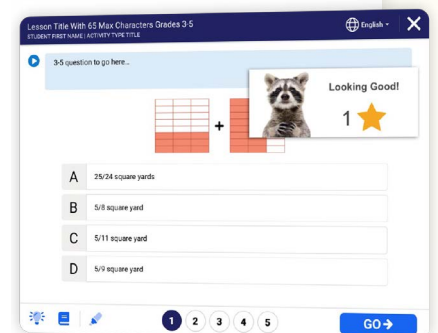


Grades K–12

Ensure every student is algebra-ready with adaptive, age-appropriate learning paths

Imagine MyPath uses assessment data to design individualized learning paths that strengthen foundational skills, prioritize domain-specific critical skills, and prepare students for advanced problem-solving.

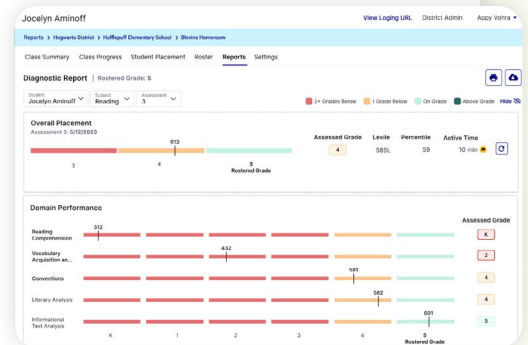
- ✓ Personalized learning paths address discrete skill gaps
- ✓ K–12 Spanish math assessments and K–5 Spanish math instruction included
- ✓ Imagine MyPath Assessments report National Percentile Ranks (via MetaMetrics® partnership) that help show how students are performing compared to their peers



Flexible math assessments that work alongside your core and supplemental math programs

Discover a comprehensive assessment system that delivers diagnostic, benchmark, and formative insights to support personalized math instruction.

- ✓ Granular, domain-level insights from Imagine+ Diagnostic inform personalized learning paths in Imagine MyPath and Imagine+ Math, maximizing growth by adapting instruction throughout the year.
- ✓ Imagine+ Formatives' nearly 500 short, standards-aligned, prebuilt assessments empower teachers with a quick picture of math learning to respond to students' needs in the moment.
- ✓ Imagine+ Benchmarks provides meaningful, standards-aligned checkpoints that measure progress toward and mastery of grade-level expectations for grades 3–8. For users of core math program Imagine IM, benchmark assessments align to the program's scope and sequence.



professional imagine learning

Professional learning that supports strong math implementation

Imagine Professional Learning helps districts maximize their instructional tools with flexible, practical support.

- ✓ Synchronous, facilitator-led learning delivered in person or virtually to support onboarding and implementation milestones
- ✓ Open-enrollment and self-paced learning options that provide support aligned to educator needs
- ✓ Professional learning subscriptions offer ongoing access to webinars, targeted sessions, and asynchronous learning
- ✓ Embedded coaching and collaborative structures, including PLCs, Lesson Labs, and Learning Walks, when applicable

Personalized implementation for powerful results

From elementary stations to middle school schedules, educators can build a model that supplements math instruction for each student.

Sample Elementary School Model

	Monday	Tuesday	Wednesday	Thursday	Friday
All Students	🕒 30 minutes plus math	🕒 15 minutes math facts	🕒 30 minutes plus math	🕒 15 minutes math facts	🕒 30 minutes math
Students enrolled in additional RTI time	🕒 30 minutes plus math		🕒 30 minutes plus math		🕒 30 minutes plus math

Imagine+ Math for age-appropriate intervention, on-grade level practice, or enrichment

Imagine Math Facts for fact fluency 2x per week

Additional **Imagine+ Math** 3x per week during RTI time for extra intervention support

Sample Middle School Model

Grade-Level Students

Monday	Tuesday	Wednesday	Thursday	Friday
🕒 30 minutes math or plus math	🕒 15 minutes math facts	🕒 30 minutes math or plus math	🕒 15 minutes math facts	

Imagine Math or **Imagine+ Math** for on-grade level practice 2x per week

Imagine Math Facts to ensure pre-algebra-readiness 2x per week

Students Needing Intervention

Monday	Tuesday	Wednesday	Thursday	Friday
🕒 30 minutes mypath or plus math	🕒 15 minutes math facts	🕒 30 minutes mypath or plus math	🕒 15 minutes math facts	🕒 30 minutes mypath or plus math

Imagine MyPath Math or **Imagine+ Math** to close math gaps with age-appropriate instruction 3x per week

Imagine Math Facts to ensure pre-algebra-readiness 2x per week

Students Needing Enrichment

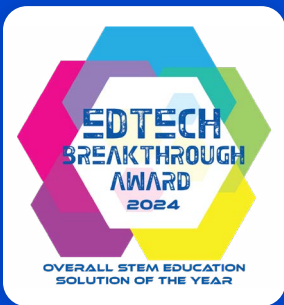
Monday	Tuesday	Wednesday	Thursday	Friday
🕒 30 minutes math or plus math	🕒 15 minutes math facts	🕒 30 minutes math or plus math	🕒 15 minutes math facts	

Imagine Math educator-created custom pathways or **Imagine+ Math** for enrichment 2x per week

Imagine Math Facts to ensure pre-algebra-readiness 2x per week



Empower each learner with personalized supplemental math solutions that strengthen skills, support intervention, and extend learning to build lasting math confidence.



imaginelearning.com/math

877-725-4257 • solutions@imaginelearning.com