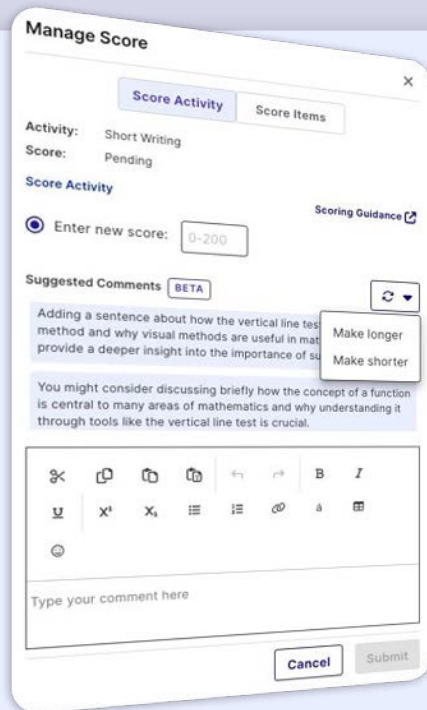


Grading Assistant in Imagine EdgeEX™

Secure, convenient, customizable AI to empower human potential

Imagine finishing your essay grading in half the time, with more detailed feedback than you could write manually. Imagine EdgeEX's Grading Assistant acts as an impactful feedback assistant by providing teachers with AI-suggested comments for students' short writing submissions and essay drafts in the four core subject areas. Built in alignment with our Curriculum-Informed AI™ philosophy, feedback integrates best practices no matter the student's writing level or grade.



Imagine EdgeEX's Grading Assistant is:

✓ Secure

Your students' data is handled responsibly by a provider you know and trust. The tool also reports back to the educator if any concerning content is found.

✓ Convenient

Suggestions are aligned to the learning objective and cover multiple aspects of writing quality, providing highly targeted feedback directly within Imagine EdgeEX.

✓ Customizable

You're provided a minimum of 6 specific, actionable suggestions per submission covering content, organization, voice, and mechanics. Feedback targets growth areas and celebrates student strengths. You can add, remove, or change content; the AI feedback is a starting point or suggestion, but you don't need to stop there.

Since launch, this assistant has been used by teachers more than 60,000 times, saving at minimum 5,000 hours of valuable teacher time.



Imagine Learning is a
member of the EDSAFE AI
Industry Council

Imagine Learning's Vision for Curriculum-Informed AI

At Imagine Learning, we're committed to shaping the future of education through AI that is purpose-built for educators and grounded in curriculum. Our AI approach centers on human potential, empowering teachers while creating more personalized, meaningful learning experiences for every student.

WE EMPOWER EDUCATORS THROUGH AI BY:

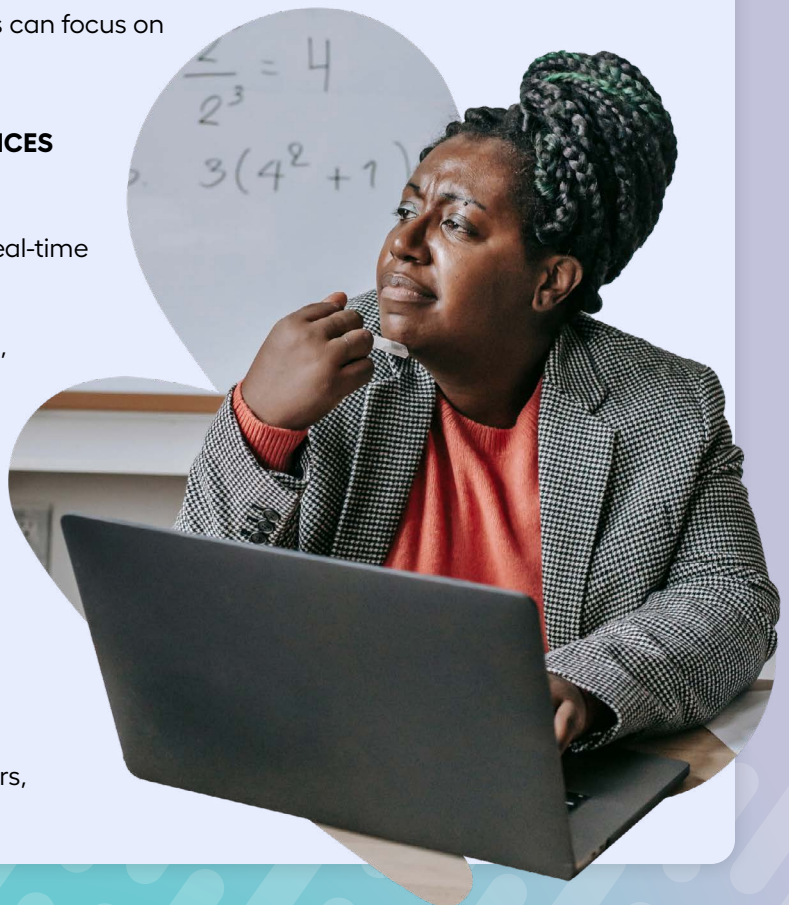
- ✓ Delivering intuitive tools that amplify instructional impact
- ✓ Reducing administrative burdens so teachers can focus on what matters most — students

WE DESIGN AI-ENHANCED LEARNING EXPERIENCES THAT:

- ✓ Adapt to individual learner pathways using real-time data and insights
- ✓ Spark deeper engagement through dynamic, curriculum-aligned content

OUR COMMITMENT TO RESPONSIBLE AI:

- ✓ Prioritizing ethical design grounded in transparency and safety
- ✓ Ensuring student data privacy and fairness across all experiences
- ✓ Supporting equitable access for all learners
- ✓ Strengthening collaboration among educators, families, and administrators



Let us show you how our AI is transforming education. Request a demo at:
info.imaginelearning.com/EdgeEX-ai