

Grading Assistant AI Tool in Imagine EdgeEX™ Accelerates Teacher Response Times and Student Learning

At Imagine Learning, AI innovation follows our Curriculum-Informed AI™ philosophy to ensure every tool is grounded in high-quality instructional materials and evidence-based practices. We deliver products and AI tools that adapt to educators' needs, protect their professional judgment, and keep the focus on measurable student outcomes.

Launched during Back to School 2024, Grading Assistant, the AI-powered feedback capability in Imagine EdgeEX, exemplifies this philosophy. Teachers using the Grading Assistant tool return feedback on student writing approximately 9 hours faster on average — nearly a 28% improvement compared to non-users — while maintaining their own voice and professional control.

Grendel:

He sang of Hrothgar, hoarfrost white, magnificent of mind.
When he finished, the hall was as quiet as a mound. I too was silent, my ear pressed tight against the timbers. Even to me, incredibly, he had made it all seem true and very fine. Now a little, now more, a great roar began, an exhalation of breath that swelled to a rumble of voices and then to the howling and clapping and stomping of men gone mad on art. They would seize the oceans, the farthest stars, the deepest secret rivers in Hrothgar's name! Men wept like children: children sat stunned. It went on and on, a fire more dread than any visible fire.

—Grendel,
John Gardner

Beowulf:

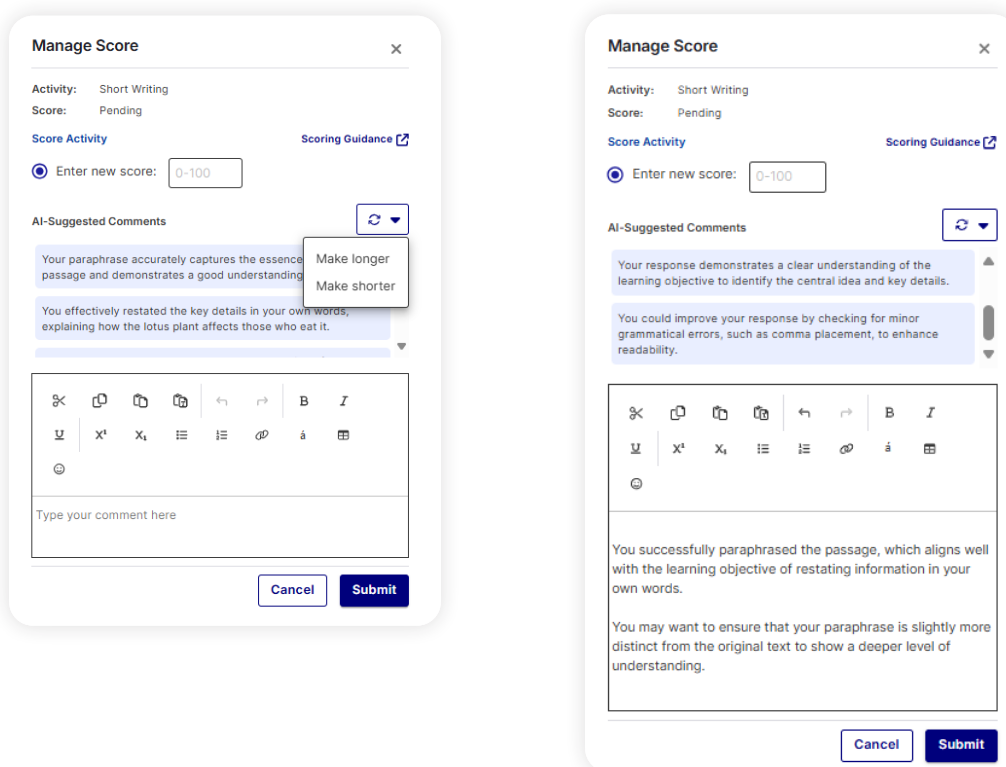
These passages from *Beowulf* and *Grendel* describe feasts in Hrothgar's hall. Write three to four sentences comparing and contrasting how the people are characterized in each passage. Use details from the text to support your answer.

In John Gardner's "Grendel," the people in Hrothgar's hall are depicted as being profoundly moved and almost overtaken by the minstrel's song, reacting with an intense, almost frenzied emotional response. The imagery of men gone mad on art, weeping, and children stunned highlights the overwhelming power of the performance and the collective emotional catharsis it induces. In contrast, Seamus Heaney's "Beowulf" portrays the people as more composed and orderly during the feast. The Geats and Danes are described as proud, strong, and stalwart, enjoying the minstrel's song in a more dignified and controlled manner. The attendant pouring mead and the minstrel gladdening the hall with his song convey a sense of joyous yet measured celebration, highlighting a difference in the intensity and nature of the characters' reactions in each passage.

130 Words

In the tool, when a student submits a response, the teacher is presented with a set of AI-suggested comments during grading. These comments are based on pedagogically sound grading criteria and are written in a professional yet encouraging tone, helping teachers deliver feedback that is both supportive and actionable. Teachers can adopt, edit, or refine the comments as they see fit, ensuring that AI serves as an assistant, not a replacement.

By streamlining feedback, Grading Assistant enables teachers to focus more on instruction and relationship-building, while students benefit from clear, constructive, and motivating guidance on their writing.



Adoption and reach

Since launch, usage has grown rapidly across the country. Grading Assistant has been used more than 57,000 times, with adoption spanning 272 schools and 185 districts. While most usage is in English Language Arts (ELA), teachers in social studies, science, and math are also incorporating the tool.

Three out of four short-writing comments now incorporate AI-generated suggested comments. Peaks in January and June show educators rely on the tool most during their busiest grading periods.

What it means: Teachers aren't just trying the tool; they're integrating it into daily practice. Usage peaks at semester transitions in January and June, which demonstrates that teachers benefit from AI during their busiest grading periods.

57k+

Grading Assistant has been **used over 57,000 times** since launch




75%

75% of all teacher comments are AI feedback suggestions

272&185

Since launch, **272 schools & 185 districts** have used Grading Assistant

Grading Assistant is:

-  **Grounded in research:** Feedback suggestions are aligned to learning objectives and cover key aspects of writing quality including content, organization, voice, and mechanics.
-  **Shaped by teacher input:** Teachers choose how to use the tool. They can adopt comments verbatim, make small edits, or use suggestions as inspiration. In every case, teachers remain in control.
-  **Focused on measurable outcomes:** Grading Assistant saves time, accelerates grading, and improves the speed at which students receive feedback, which increases its instructional impact.

Key benefits

Faster feedback

Teachers using Grading Assistant return assignments an average of 23 hours after submission, compared to 32 hours for non-users. That's 28% faster. This means students act on comments while their work is still fresh, increasing the likelihood of learning gains.

28%

Reduced
response times
by **28%**

9

On average, **9 hours**
faster feedback to
students

1 in 8

1 in 8 AI adopters return
feedback within 1 hour of
submission

Teachers reclaim hours each week that can be reinvested in instruction and student support.

What it means: The clearest benefit is speed. Faster turnaround means students can act on feedback while their work is still fresh, increasing the likelihood of learning gains. Meanwhile, teachers reclaim hours each week, time that can be reinvested in instruction and student support.

Richer feedback with teachers in control

Over 61% of teachers who use Grading Assistant pull in multiple suggestions per assignment, showing confidence in the quality and variety of comments. Nearly 18,000 instances included two or more AI-generated suggestions, and some feedback drew on as many as eight. Rather than replacing teacher judgment, AI functions as a thought partner, helping teachers build richer, multi-dimensional feedback more efficiently.

61%

Over 61% of AI adopters
use multiple comments
per assignment

18k

Nearly 18,000 instances
included two or more AI
suggestions

8

Some feedback included
as many as 8 different
AI-generated comments

What it means: Far from replacing teacher judgment, the AI acts as a thought partner. Teachers use multiple suggestions to efficiently craft rich, multi-dimensional feedback.

Broad impact

By spring 2025, 58% of all short-writing feedback in Imagine EdgeEX was AI-powered — a 17 percentage-point increase over the first semester. The trend underscores how quickly educators are moving beyond trial to integration in daily practice.

What it means: The rapid growth from first to second semester shows that Grading Assistant is not just an experimental tool but a trusted part of teachers' daily workflow. The steady increase signals growing confidence in AI-powered feedback, demonstrating that when technology aligns with teacher needs, it can scale quickly across classrooms and subjects.

Looking ahead with Curriculum-Informed AI

The success of Grading Assistant's AI-powered feedback in Imagine EdgeEX is only the beginning. In May 2025, Imagine Learning expanded the capability to long-form writing, and future development will extend AI-powered instructional support across the curriculum. Each innovation follows the principles of Curriculum-Informed AI: grounded in pedagogy, shaped by teacher voice, and focused on measurable student outcomes.

By improving efficiency, accelerating feedback, and supporting teachers where they need it most, Imagine Learning uses AI to help educators drive stronger outcomes for their students.