

# Program Overview

NEW EDITION

A Comprehensive ELA Curriculum for Grades 6–12





# Welcome to StudySync

## Bring Literature to Life

Grounded in the latest literacy and learning science research, StudySync supports every teacher in reaching every learner. With instruction centered around text-based knowledge building, integrated writing, and flexible delivery models, educators are empowered to teach with confidence, while a robust text library and unparalleled student-facing differentiation ensure all students see themselves in what they're reading and discover a love of literature.

**Bring literature to life with StudySync,  
a comprehensive ELA curriculum for grades 6–12.**







## Teach with confidence

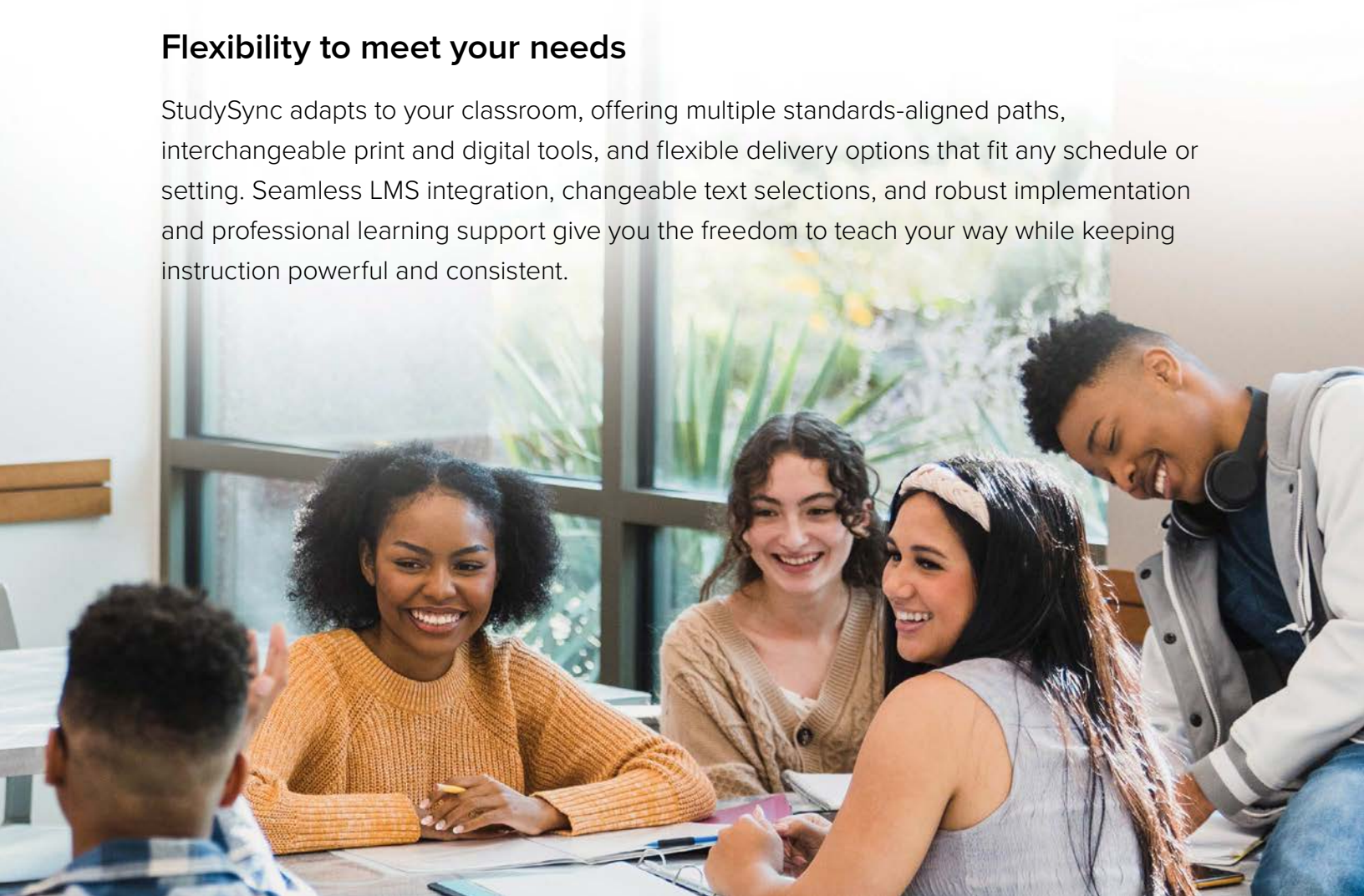
StudySync evolves with your needs, bringing the latest literacy and learning science straight into your classroom so you can teach with confidence every day. Cohesive text sets, integrated writing and vocabulary instruction, and embedded science of learning routines work together to deepen comprehension, build knowledge, and prepare students for success on assessments — all in one seamless platform.

## Reach every learner

Engage every student with immersive multimedia, a one-of-a-kind library of literature and nonfiction, and five levels of built-in scaffolds that make differentiation effortless. Integrated ELL supports, advanced extensions, and AI-enhanced writing feedback combine to help each learner grow, see themselves in the texts they read, and develop the skills they need to thrive.

## Flexibility to meet your needs

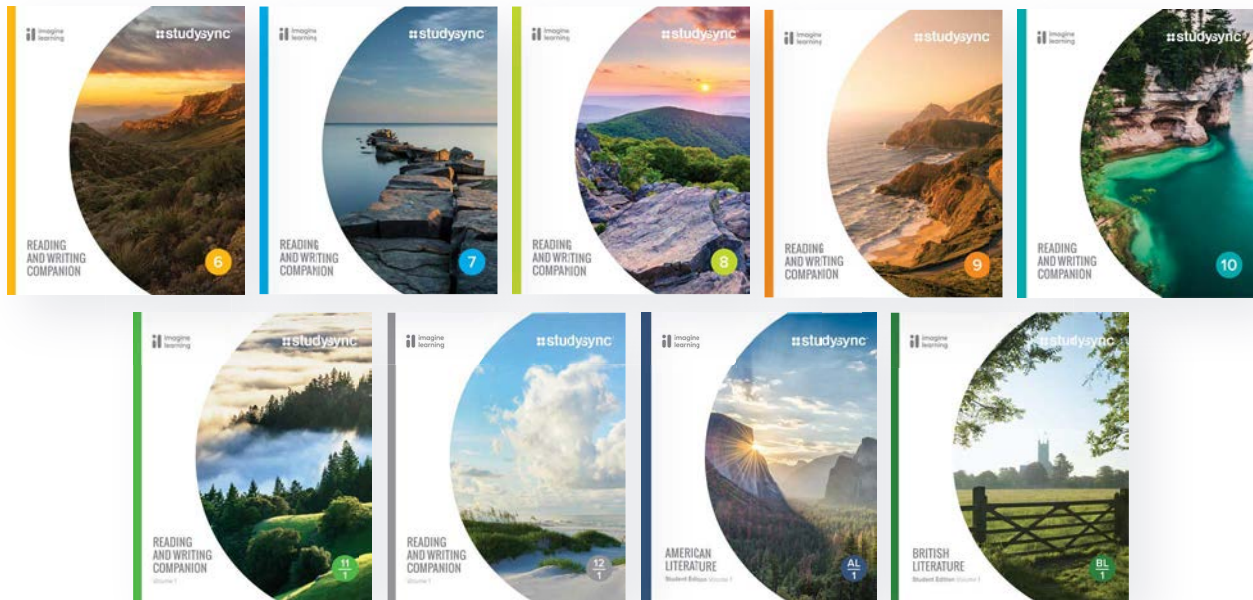
StudySync adapts to your classroom, offering multiple standards-aligned paths, interchangeable print and digital tools, and flexible delivery options that fit any schedule or setting. Seamless LMS integration, changeable text selections, and robust implementation and professional learning support give you the freedom to teach your way while keeping instruction powerful and consistent.



# Program Components

Easily deliver strong ELA instruction with a complete suite of print and digital resources to support you and every learner in your classroom.

## Print Student Edition



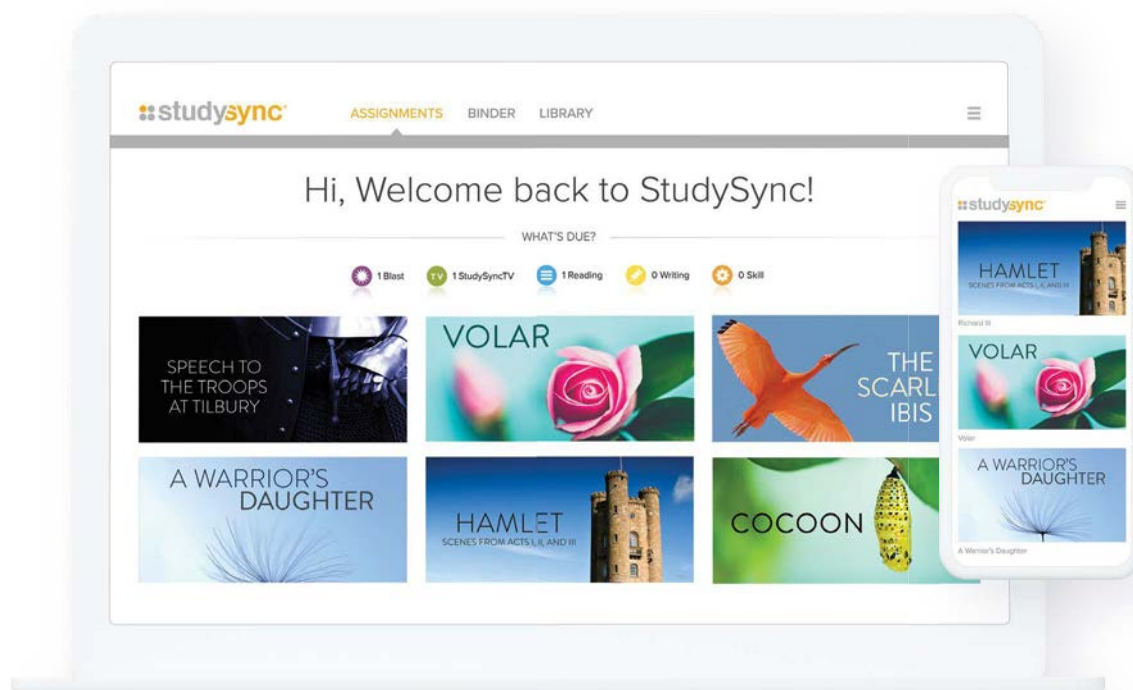
## 2-Volume Print Teacher Edition





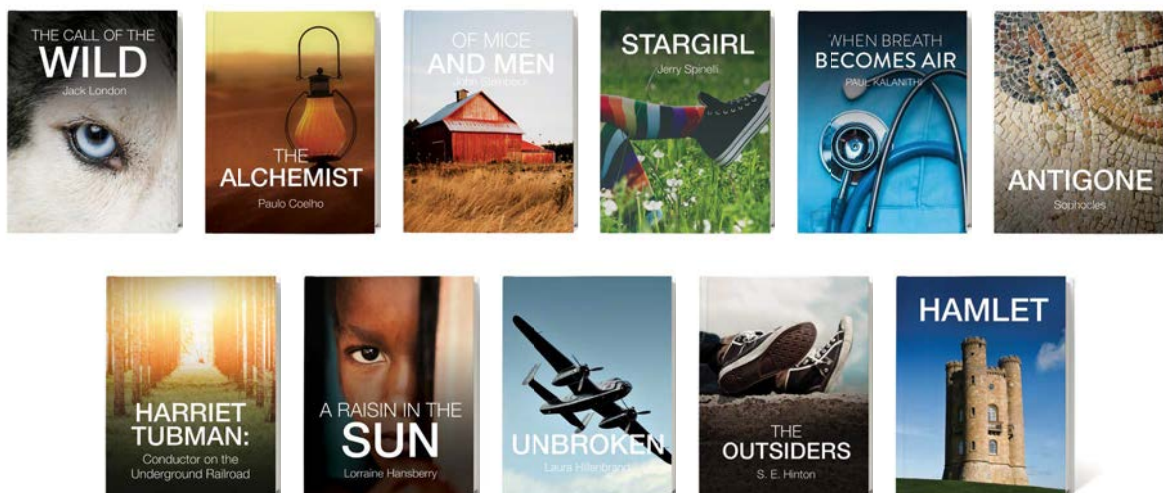


## Robust Student and Teacher Digital Experience



### Novel Options\*

\*Not all options shown here — StudySync provides an unmatched library of literature and nonfiction titles.



# In Sync With Today's Evidence-Based Instruction

The science of reading for grades 6–12 centers on evidence-based practices that help adolescent learners become strategic, analytical readers. StudySync brings this research to life by expanding students' background knowledge, deepening comprehension, strengthening academic language, and building the writing and thinking skills they need to navigate complex texts with confidence.

With rich content, intentional routines, and a flexible design that supports every learner, StudySync transforms science of reading principles into meaningful, everyday instruction.

Here are just a few ways StudySync turns science of reading-aligned strategies into daily learning:





SCIENCE OF  
READING



## Close Reading

StudySync Core ELA units support close reading through a consistent reading routine of First Read lessons, skill lessons, and Close Read lessons. In this routine, students construct the meaning of complex texts while they learn and apply standards-based reading skills.

SCIENCE OF  
READING



## Knowledge-Building

Each Core ELA unit contains texts built around several knowledge-building topics, including the unit's genre focus, literary focus, and aspects of text complexity. Build Background and Content Knowledge features help students access the knowledge demands of the text.

SCIENCE OF  
READING



## Vocabulary and Word Study

Students work with academic and content vocabulary across lessons so they can use terms in discourse about unit texts. Also, StudySync's suite of Word Study lessons is designed specifically for older students and intended for flexible use in whole class or small group scenarios.

SCIENCE OF  
READING



## Fluency

Texts include Develop Reading Fluency activities to support students in becoming confident readers. StudySync also offers beginning, middle, and end-of-year fluency benchmarks, as well as supplementary fluency-specific units with embedded audio to support readers at any level.

SCIENCE OF  
READING



## Science of Learning

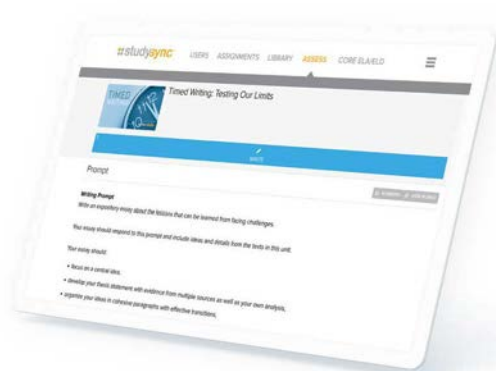
Embedded science of learning practices include modeling with concrete examples in Skill Lessons; interleaving, spaced and retrieval practice in Mid-Unit Assessment; immediate and reflective feedback in writing instruction, Close Reads, and Independent Reads.

## Data-Driven and Standards-Aligned Assessment

Assessment guides instruction in StudySync. Ongoing diagnostic, benchmark, formative, and summative assessments provide teachers with the information they need to monitor and support every student's progress toward grade-level standards mastery.

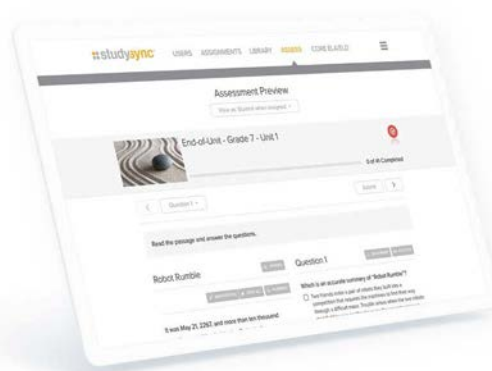






### Writing Prep

Timed writing prompts reflect the genres, topics, and formats of prompts that students will encounter on state assessments.



### Test Preparation and End-of-Unit Assessments

Format and content of questions look and feel just like what students will encounter on state assessments.

## Imagine+ Assessment to Measure Progress

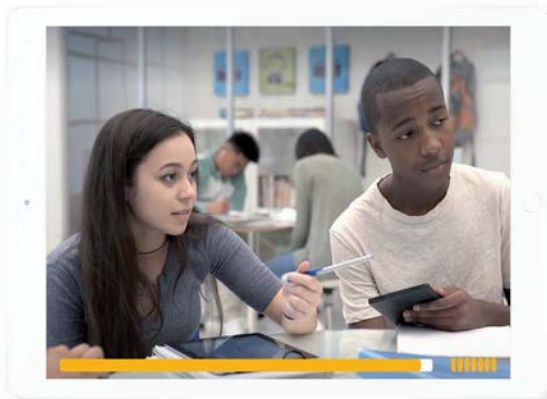
Imagine+ Assessment provides educators with reliable, actionable data to support instruction and student growth across K–12 English language arts.



Together, the **Imagine+ Diagnostic** and **Imagine+ Formatives** offer a balanced, complementary approach to assessment by identifying each learner's starting point and continually measuring their understanding of essential skills and standards throughout the school year.

# Reach Every Learner

StudySync combines captivating literature, dynamic and original multimedia, and personalized differentiation to ensure every student has the access and support they need to thrive — so every learner can discover a love of literature and realize their full potential.



## Engaging Digital Experiences

Engaging multimedia spark students' interest and keep them coming back for more!

- **StudySyncTV:** Movie trailer-like previews get students excited to start a new piece of literature
- **SkillsTV:** Peer models for collaborative discussions
- **Blasts:** Thought-provoking read/write activities foster lively discussion in a social media-type environment



## Literature to Captivate

StudySync provides an unparalleled selection of literature and nonfiction, ensuring every student can see themselves in what they're reading.

Our ever-expanding **Literature Library** features thousands of full-length texts:



### StudySync Digital Library

Short stories, poems, novels, dramas, and more. New English and Spanish texts are added every month!



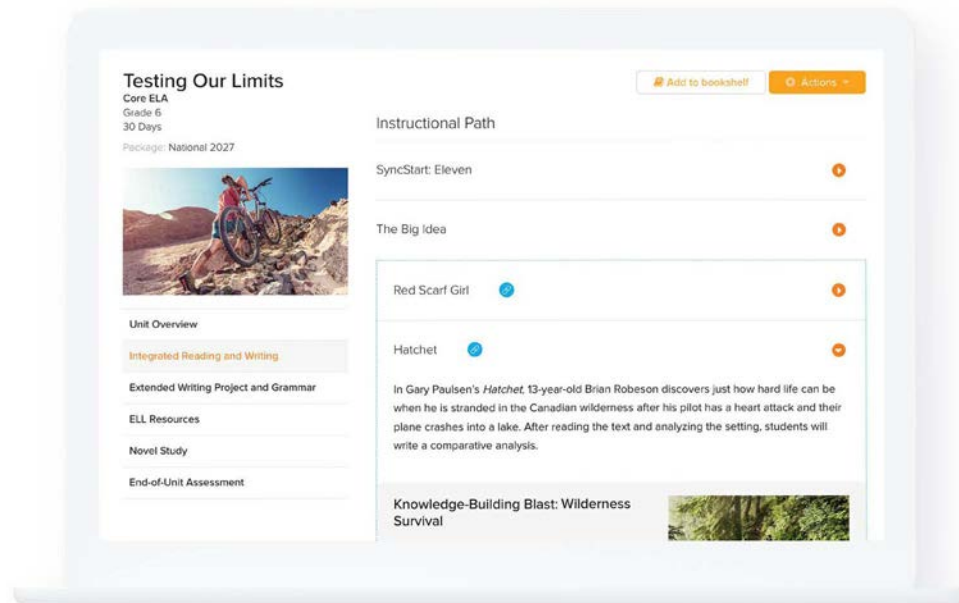
### Print Novel Collection

Classic and contemporary full-length works to support your StudySync curriculum, in a traditional print format.



## Integrated Reading, Writing, and Language Arts

Through intentional integration of reading, writing, and language arts, StudySync makes it easy for teachers to turn the science of reading into action every day.



- **Close reading** facilitates meaningful and dynamic interaction with text
- If students read about it, they write about it: note-taking, annotating, short constructed responses, and an end-of-unit **Extended Writing Project**
- Emphasis on reinforcing all claims with concrete textual evidence and reasoning
- Explicit **grammar** instruction in the context of the writing process, never in isolation
- Vocabulary, Word Study, and Reading Fluency integrated throughout each unit
- Knowledge-Building Blasts weave in **disciplinary literacy** in science, fine arts, and social studies



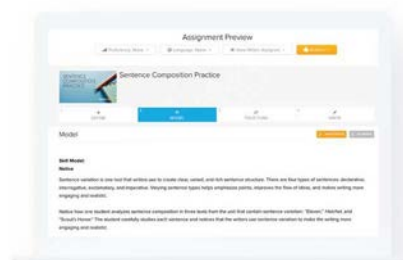
## Strengthen and Simplify Writing Feedback

With multiple supports for both students and teachers infused directly into reading and writing instruction, providing high-quality, immediate feedback (enhanced by AI) has never been more effective or easier.



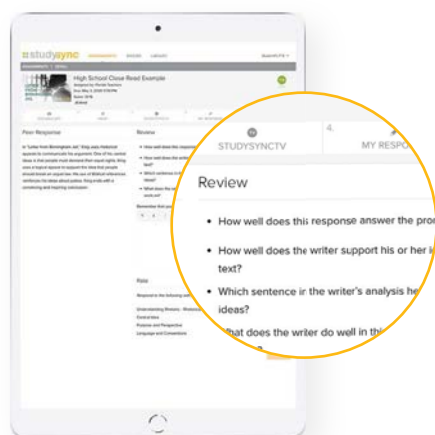
### WritePrecise

Designed to save teachers time and maximize revision, WritePrecise is integrated directly into StudySync's platform.



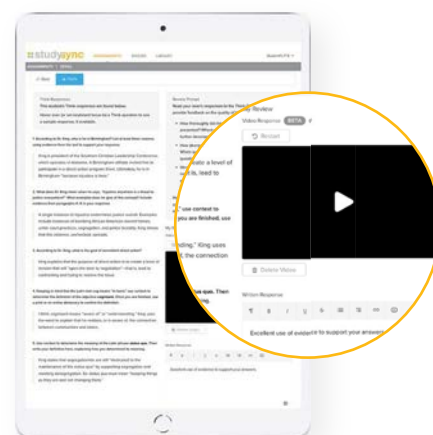
### Sentence-Level Feedback

Boost sentence fluency with targeted instruction that helps students recognize and replicate powerful sentence structures from rich, authentic texts.



### Anonymous Peer Review

Available for every written response in StudySync, Anonymous Peer Review provides immediate feedback and creates an authentic audience for all student writing.



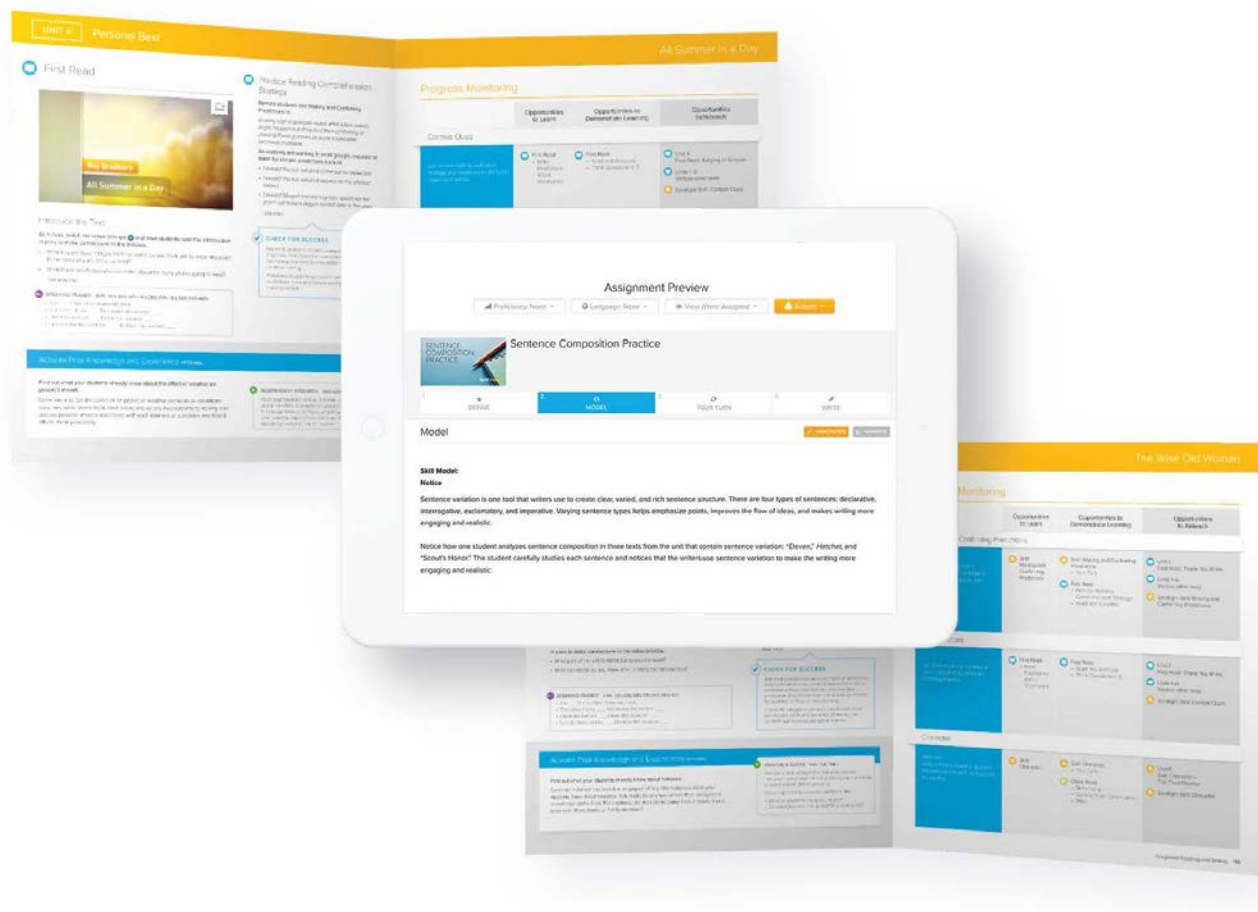
### Video Feedback Tool

StudySync's Video Feedback Tool allows teachers to provide students fast, verbal feedback on writing assignments.

# Differentiate to Elevate

Every student using StudySync has the same opportunity and access regardless of native language, proficiency level, or processing ability.

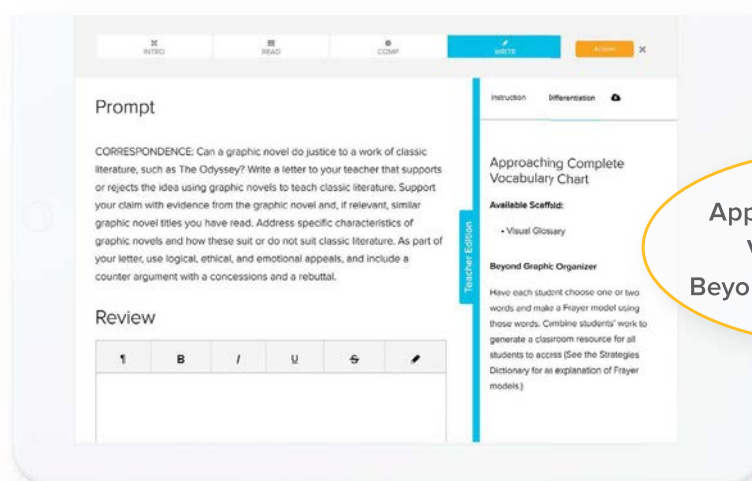
Both the print and online teacher experiences include point-of-use differentiation suggestions and instruction. Each lesson in the core curriculum offers digital scaffolds, providing targeted **student-facing support** you won't find anywhere else.







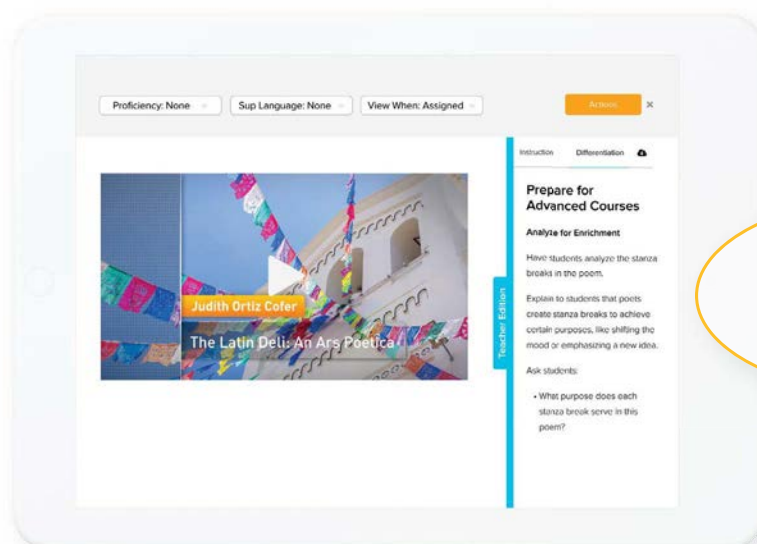
## Approaching and Beyond Grade-Level Learners



Approaching: Complete  
Vocabulary Chart  
Beyond: Graphic Organizer

### Approaching

Approaching grade-level students engage in supports designed specifically for them so they can access grade-level activities with depth and rigor.



Prepare for  
Advanced Courses

### Beyond Grade-Level

Extension and Prepare for Advanced Courses activities are found in lesson plans and are designed to stretch student thinking.

## Integrated ELL Supports

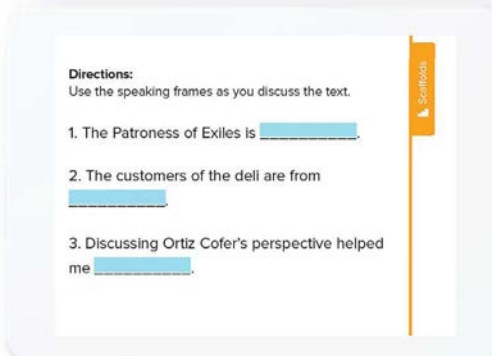
For ELLs (or multilingual learners), StudySync includes both integrated and designated supports. Each lesson includes scaffolded support for four levels of English language learners. These targeted scaffolds **automatically appear** with every digital assignment and are specifically tailored to each activity.

As students increase their English proficiency, scaffolds decrease, providing students at each level an appropriate amount of support.



Term	Definition	Image
anxious <i>ansioso/a</i>	wanting something, but with a feeling of not being sure  <i>querer algo, pero con el sentimiento de no estar seguro/a</i>	
automatically <i>automáticamente</i> COGNATE	happening without thought or action  <i>que sucede sin pensamiento ni acción</i>	

Visual Glossary and Spanish Cognates



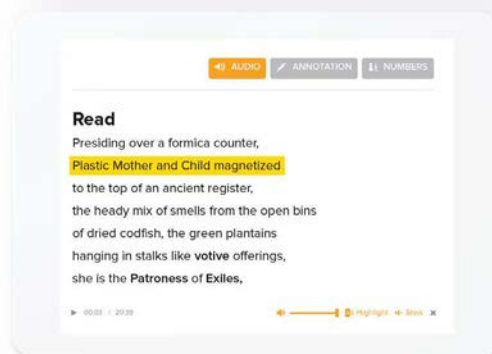
**Directions:**  
Use the speaking frames as you discuss the text.

1. The Patroness of Exiles is \_\_\_\_\_.

2. The customers of the deli are from \_\_\_\_\_.

3. Discussing Ortiz Cofer's perspective helped me \_\_\_\_\_.

Speaking and Sentence Frames



**Read**  
Presiding over a formica counter,  
**Plastic Mother and Child magnetized**  
to the top of an ancient register,  
the heady mix of smells from the open bins  
of dried codfish, the green plantains  
hanging in stalks like votive offerings,  
she is the Patroness of Exiles.

▶ 00:02 / 20:20      🔊 Highlight 🔊 Stop 🔊




Audio with Variable Speed and Text Highlight

In addition to digital scaffolds, every lesson includes differentiation suggestions for the teacher outlining specific strategies and scaffolds to support every student.



## Designated ELL Resources

The English Language Learners Resources offer 20 lessons in each unit in addition to and supportive of the core curriculum. Each unit consists of two created texts written for ELL (or multilingual learner) students at four proficiency levels — Beginning, Intermediate, Advanced, and Advanced High. The unit builds towards a culminating writing and speaking performance task for the Extended Oral Project.

EL TEXTS	DIFFERENTIATED TEXT LEVELS	SKILL INSTRUCTION
	<p><b>BEGINNING</b> 590L   370 Words  <b>INTERMEDIATE</b> 820L   606 Words  <b>ADVANCED</b> 930L   622 Words  <b>ADVANCED HIGH</b> 1040L   730 Words</p> <p>Use this text in place of, or as an extension to The Namesake</p>	<ul style="list-style-type: none"> <li>• Sight Vocabulary and High-Frequency Words</li> <li>• Using Pretending Supports</li> <li>• Analyzing Expressions</li> <li>• Developing Background Knowledge</li> <li>• Pronouns and Antecedents</li> </ul>
	<p><b>BEGINNING</b> 800L   649 Words  <b>INTERMEDIATE</b> 900L   672 Words  <b>ADVANCED</b> 960L   705 Words  <b>ADVANCED HIGH</b> 1010L   709 Words</p> <p>Use this text in place of, or as an extension to By Any Other Name</p>	<ul style="list-style-type: none"> <li>• Classroom Vocabulary</li> <li>• Environmental Print</li> <li>• Language Structures</li> <li>• Main Ideas and Details</li> <li>• Spelling Patterns and Rules</li> </ul>
	<p>In this Extended Oral Project, students write and perform a dramatic scene. This may be assigned in place of this unit's EWP.</p>	<ul style="list-style-type: none"> <li>• Acquiring Vocabulary</li> <li>• Sentence Lengths</li> </ul>

Like their counterparts in the Integrated Reading and Writing section, ELL Resources are organized around a First Read, a Close Read, and associated Skill lessons. ELL skill lessons emphasize explicit vocabulary instruction, language acquisition, spelling and grammar conventions, and reading comprehension.



# Flexibility to Meet Your Needs

Unmatched flexibility and choice allows you to take our content and mold it to you and your students' exact needs. Customizable text selections, interchangeable print and digital tools, and a variety of delivery formats mean you can be confident that StudySync can adapt to your needs. **Pick your path** with multiple instructional pathways to choose from:



100%

STANDARDS  
ALIGNED

## 1. Core ELA Units

These units contain thematically-linked texts from a variety of genres. Selections include multiple paired reading and independent reading opportunities.



100%

STANDARDS  
ALIGNED

## 2. Novel Study Units\*

Each unit has multiple novel study options, linked to the unit by both theme and comparative texts.

\*Novel Study Units only meet 100% of standards at grades 9–12



## 3. Unit Creator

Build the units you want using the Digital Library — thousands of texts, standards-aligned skill lessons and prompts, as well as engaging Blasts.



## Interchangeable Print and Digital Instructional Tools

While all pathways can be taught in a fully digital format, essential instructional elements including lesson plans, scaffolds, and reproductions of pages from the print Student Edition are also provided in our robust 2-volume print Teacher's Edition. Use print and digital resources interchangeably based on the needs of you and your students.

**Table of Contents**

**Unit Overview**

**Testing Our Limits**  
What do we do when life gets hard?

**Unit Organization**  
Each unit combines *Close Reading* and *Independent Reading* so students build effective habits for analyzing complex text.

**Lesson Organization**  
Every lesson features multiple opportunities for whole group, small group, and independent learning.

**Integrated Reading and Writing**

**English Language Learner Resources**

**Extended Writing Project and Grammar**

**End-of-Unit Assessment**

**Core ELA Unit Selections**

**Unit Overview**

**Core ELA Option**

**Pacing Guide: Core ELA**

**Unit Organization**

**Novel Study Unit Choices**

**Unit Overview**

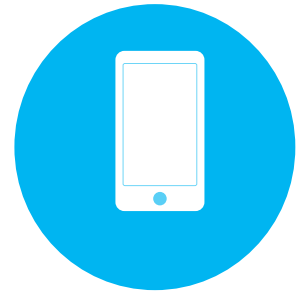
**Integrated Scaffolding**

**English Language Learner Resources**

**ELL Resources**

## Choose Your Delivery

With content that can be accessed seamlessly across **print**, **digital**, and a **student mobile app**, StudySync's flexible delivery options allow teachers and districts to choose what works best for them and their students.



StudySync's options allow for a wide range of instructional delivery models, including both **online and offline** instructional models.

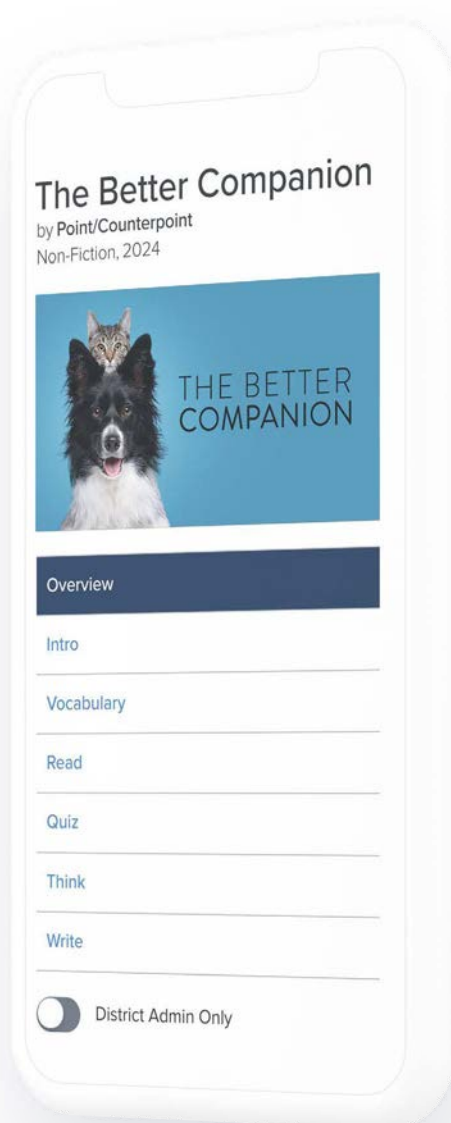


Our **mobile app** allows students to work offline, whenever and wherever. Completed work is automatically uploaded when the app next connects to the internet.



## Customize Your Text Selections

We respect the choice and discretion of teachers and administrators. 100% of text selections and accompanying instruction within the Core ELA and Novel Study pathways are compliant with state requirements, but with our optional Admin ability to customize StudySync Library text selections, you are empowered to exercise additional choice over what selections are — and are not — included in your StudySync curriculum.





# From Inspiration to Implementation: Everything You Need to Thrive

## Professional Learning that Moves You Forward

Imagine Learning provides flexible virtual and in-person support to help you bring StudySync to life in your classrooms with confidence. A dedicated Customer Success Manager partners with your team to plan, guide, and sustain success, while built-in tools within the platform support continuous professional learning.

Imagine Learning provides ongoing support in the form of:

- LMS integration support to help plan and deliver your optimal integration experience
- Live webinars on topics ranging from Basic Trainings to Deeper Dives for both administrators and instructional staff
- An **Online Professional Development** course with a complete Quick Start Course as well as in depth training resources sections on ELA, ELLs, Assessments, Blended Learning, etc
- An embedded, searchable **Help Center** with video tutorials, click-path walkthroughs, instructional guides, and more



## Our Content, Your Platform

Imagine Learning offers seamless integration between StudySync and a variety of LMS platforms including:

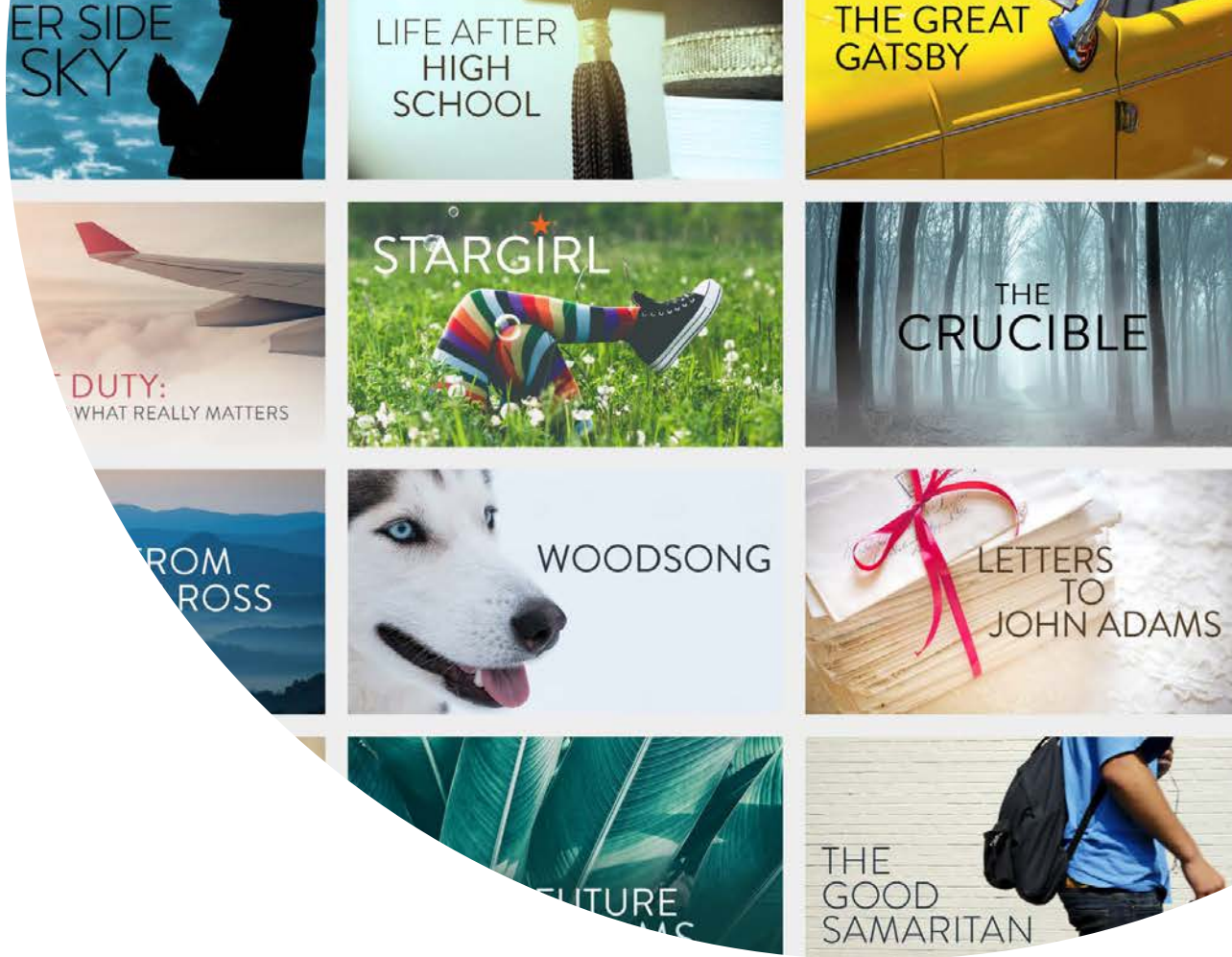


\*formerly known as Schoology



### Key integration features:

- Assignment Sync
- Teachers can create and students can complete assignments directly within their LMS.
- Grade Passback
- Grades are automatically sent to the LMS gradebook



# Ready to Bring Literature to Life?

Learn how StudySync can make your classroom come alive for every learner



[imaginelearning.com/studysync](https://imaginelearning.com/studysync)

877-725-4257 • [solutions@imaginelearning.com](mailto:solutions@imaginelearning.com)

4324108385 2512